

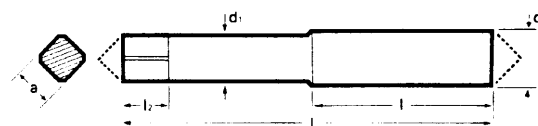
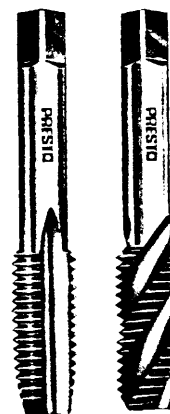
MACHINE TAPS

Metric Coarse

DIN 352 HSSE-PMC

	Range	Tap Tolerance	Finish
Spiral Point *60 712	M3-M12	Class 2 for 6H fit	Bright
Spiral Flute 60 722	M3-M12	Class 2 for 6H fit	Bright

* Available P1 Blue finish to order



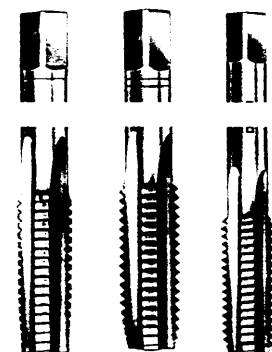
Nominal dia	Pitch	Thread length	Overall length	Shank dia	a/f	Square length	Tap drill sizes 75% to 80% full thread	60 712 Number of Flutes Spiral Point	60 722 Number of Flutes Spiral flute
mm d	mm	mm l	mm L	mm d ₁	mm a	mm l ₂	mm		
M3	0.5	11	40	3.5	2.7	6	2.50	3	3
M4	0.7	13	45	4.5	3.4	6	3.30	3	3
M5	0.8	16	50	6.0	4.9	8	4.20	3	3
M6	1.0	19	50	6.0	4.9	8	5.00	3	3
M8	1.25	22	56	6.0	4.9	8	6.80	3	3
M10	1.5	24	70	7.0	5.5	8	8.50	3	3
M12	1.75	29	75	9.0	7.0	10	10.20	3	3

HAND TAPS

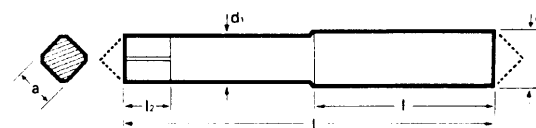
UNC/NC

DIN 352 HSSE-PMC

	Range	Tap Tolerance	Finish
Straight Flute Sets of 3			
62 762	No. 10-1"	Class 2 for 2B fit	Bright



These taps are in sets of three with full thread serialisation on the first two taps. The finishing tap is full form, they are recommended for use on the more difficult to tap materials. Other serial taps supplied to order.



Nominal dia	Threads per	Thread length	Overall length	Shank dia	a/f	Square length	Tap drill sizes 75% to 80% full thread	62 762 Straight flute Rougher	62 762 Straight flute Mid-Rougher	62 762 Straight flute Finishing
No./in d	in	mm l	mm L	mm d ₁	mm a	mm l ₂	mm			
No. 10	24	16	50	6.0	4.9	8	3.90	3	3	3
No. 12	24	19	50	6.0	4.9	8	4.50	3	3	3
1/4	20	19	50	6.0	4.9	8	5.10	3	3	3
5/16	18	22	56	6.0	4.9	8	6.50	3	3	3
3/8	16	24	70	7.0	5.5	8	7.90	4	4	4
7/16	14	24	70	8.0	6.2	9	9.30	4	4	4
1/2	12	32	80	9.0	7.0	10	10.50	4	4	4
9/16	12	32	80	11.0	9.0	12	12.10	4	4	4
5/8	11	32	80	12.0	9.0	12	13.50	4	4	4
3/4	10	40	105	14.0	11.0	14	16.25	4	4	4
7/8	9	45	110	18.0	14.5	17	19.25	4	4	4
1	8	50	110	20.0	16.0	19	22.00	4	4	4